

Ridge District VIP of the Year!

Congratulations to Peter Skeris: VIP (Volunteer in Parks) of the Year for the Ridge District. FRIENDS recognized VIPs in each of the Parkway's four Districts, paying meal costs, providing gifts of appreciation to each District's VIP of the Year, and giving water bottles to all attending volunteers. Future eNewsletters will feature VIPs of the Year from the other three Districts.

Parkway Superintendent Phil Francis personally thanked Peter, noting his help with implementing a campground reservation system at Peaks of Otter, his assistance to Parkway staff in responding to black bear/human interface issues and food storage management, and his actions as a first-responder at several motor vehicle collisions, where his firefighting experience served law enforcement and Parkway visitors well during traumatic situations. Peter has donated more than 800 hours of his time to the Parkway, and Superintendent Francis emphasized his high level of commitment to public service when presenting the award. Congratulations, Peter, and thank you!



Peter Skeris (left) receives a basket of gifts from FRIENDS representative Rod Broker

The Sounds of Silence Along the 469



Most of the leaves will have fallen by late November, but the Parkway's windblown 469 miles offer their own special pleasures this time of year. Often it's not too cold yet to open the windows, turn off the radio, and listen to the sounds of silence. As the poet Eric Sloane wrote, *"A few days ago I walked along the edge of the lake and was treated to the crunch and rustle of leaves with each step I made. The acoustics of this season are different and all sounds, no matter how hushed, are as crisp as autumn air."*

FRIENDS congratulates the travelers who recently completed their journey along the entire length of the Parkway, thereby earning their [469-Mile Awards](#):

Sharon L. Hammack, Doug Faust, M. June Perkins, F. Swift and Katherine Gibson, Scott and Jean Whitaker, Harley H. Holsten, Bill and Anne Tucker, Emily Booher, Richard and Sandra Booher, Charlene Randolph, our own FRIENDS Director of Membership Virginia E. Ehrich, Richard and Anne Hicks, Ken Hogan, Linda S. Hogan, Noreen Bania, Bob West, Alma and Ken Mathis, Agnes K. Holladay, Eddie Sheffield #1, Eddie Sheffield #2, Kathy Sheffield, Katrina Sheffield, Robert and Jean Payne, George W. Hayward, Herman and Joyce DeHart, Tim and Susie Swedine, John and Suzanne Koutroulelis, and John H. and Sue K. Ritchie.

Virginia Parkway License Plate

Only 60 more applications are needed! Order yours now!

Celebrate the 75th Anniversary of the Blue Ridge Parkway by mailing [your application](#) to FRIENDS today for this great Parkway license plate! **100% of the proceeds will benefit the Parkway.**



FRIENDS still must receive about 60 additional applications and payments this year to make this endeavor a reality. So don't delay! Mail your completed form with \$25 payment to: FRIENDS BRP, P.O. Box 20986, Roanoke, VA 24018.

Chapters Make Good Things Happen

Appalachian State University Chapter: The student chapter adopted the Tanawha Trail (mp 305.5), and a record 40 students signed up to help maintain this 14-mile-plus footpath. The chapter is also raising funds to support Parkway programs by staffing the concessions booth at home Mountaineer football games this fall. Contact [Heather Preston](#) at 828/262-2449.



A boardwalk along the Price Lake Loop Trail

Asheville Chapter: Chapter members were recognized October 8 at the Pisgah District VIP recognition luncheon at the Folk Art Center. They also scheduled an early November steering committee meeting to review this year's efforts and develop their work plan for 2011. Contact [Hugh Stephens](#) at 828/274-9048.

Boone/Blowing Rock Chapter: Under the leadership of Troop 109 Eagle Scout Brad Furman, workers are renovating the Price Lake Loop Trail (mp 297). Contact [Mike Keibelbeck](#) at 828/295-6385.

Cherokee Chapter: The chapter has been asked to lead the multi-phase trail renovation project at Waterrock Knob (mp 451.2). Contact [Robert Jumper](#) at 828/497-8127.

Fisher Peak Chapter: Along with others, Wanda and Tony Hatcher recently hosted five students from Notre Dame for a week of Appalachian immersion and service. The five volunteers planted posts, cleared and trimmed branches, and marked blazes along the chapter-maintained trails at the Blue Ridge Music Center (mp 213). Contact [Lewis Shropshire](#) at 276/238-8210.

Roanoke Valley Chapter: Thanks especially to the determination of [Lillian Fennell](#) and her granddaughter, the chapter recently raised \$226 to support Parkway programs through Macy's Shop for a Cause. The chapter is also establishing a student chapter of FRIENDS at Cave Spring High School. Contact [Shane Pendleton](#) for more information. On November 13 and 20, the chapter will begin sod-cutting and gravel installation as part of their multi-year effort to renovate the Abbott Lake Trail (mp 85.7). Contact [Regina Desper](#) at 540/819-2254.



Notre Dame students volunteering with the Fisher Peak Chapter.

Rocky Knob Chapter: The chapter needs a few citizens from the Floyd and Meadows of Dan areas to lead the steering committee, working together behind the scenes to plan and coordinate work projects and fundraising on behalf of the Parkway in that area. Contact [Rod Broker](#) at 540/772-2992.

West Jefferson/Wilkesboro Chapter: After a full summer given over to assisting in the preparation of Cumberland Knob (mp 217.5) for the BRP 75 Anniversary events, workers responded quickly to end-of-season needs on the ground at Brinegar Cabin (mp 238.5). Contact [Ken Canter](#) at 336/838-8131.

A Banner Year for Parkway Volunteers

Fiscal year 2009 has come to an end for the National Park Service and the Blue Ridge Parkway. Final reports submitted by Ann Childress, Parkway Volunteer Coordinator, indicate that 1,614 individuals volunteered time and talent to the Parkway from October 1, 2009, through September 30, 2010. The total number of volunteer hours invested in the Parkway amounted to 40,904 hours. Several special activities generated large numbers of volunteer hours this year:



The 2010 **Blue Ridge Parkway Marathon** benefited from more than 700 hours by more than 75 volunteers. (The 2011 Marathon is scheduled for April 16, 2011.)

The Parkway's **75th Anniversary** celebrations relied on a 30-member volunteer board who donated 2,698 hours of service.

Roanoke Mountain Campground enjoyed the services of a large group of 5th-grade students who spent a full day getting the campground ready to open after a hard winter. This was in addition to two viewshed plantings with high volunteer participation.

Warren Wilson College students completed two full weeks of painting and other maintenance work in North Carolina.

FRIENDS of the Blue Ridge Parkway is grateful to be the Parkway's partner by providing support in recruiting, recognizing/awarding volunteer service, and in playing a significant role in volunteer data management. Thank you to all who stepped up to serve! We look forward to even greater numbers next year!



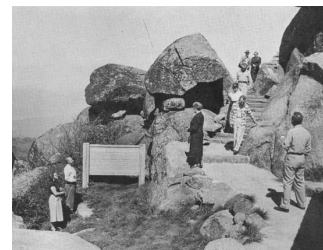
Make a
Donation

FRIENDS of the Blue Ridge Parkway utilizes volunteer services, but needs your support to fund our programs. FRIENDS is unique: for every \$1.00 you invest, Parkway volunteers provide \$3.00 of volunteer service back to the Blue Ridge Parkway! Together we are making a difference! Please offer your generosity in support of our mission to preserve, promote and enhance the Parkway. Thank you.

Trails and Overlooks

Two new groups have recently joined FRIENDS Chapters and volunteers to take on the joys and responsibilities of adopting portions of the Parkway.

The **Roanoke (VA) Outdoor and Social Club** has adopted Sharp Top Trail (mp 86.0) and the **Walnut Cove Members Association** in the Avery Creek area of Arden, NC, has adopted the two overlooks at Walnut Cove (mp 396.4) and French Broad parking area (mp 393.8). Contact [Jim Peterson](#) at 828/654-6494.



Archived NPS photo of Sharp Top.

If you, your family and friends, or another group are interested in adopting a trail or overlook, please visit the [FRIENDS website](#) for more information.

A Few Winter Parkway Closures

Closure 1 (Asheville NC): The Blue Ridge Parkway has closed the section of Parkway between Pine Mountain Tunnel (mp 399) and North Carolina Route 151 (mp 405). The closure began on Monday, November 1, 2010, and requires a complete closure to all public traffic. Due to dangerous conditions that currently exist in the workzone, foot, bicycle, and other traffic will remain strictly prohibited until the area is reopened. Both lanes are estimated to be open for traffic by early spring 2011. When traveling south on the Parkway, the signed detour will follow State Route 191 to State Route 280, interconnecting to State Route 276 in Brevard and back to the Parkway, just south of the Pisgah Inn. The detour shall be taken in the opposite direction when traveling north.

Closure 2 (Alleghany County NC): The Blue Ridge Parkway will be closed to all traffic from mp 241 near the Bluffs Coffee Shop to mp 244.7 at Basin Cove Parking Overlook until spring 2011. Detour traffic signage will direct Parkway visitors around the closure area via NC Route 18 and US Highway 21. Access to the Bluffs Lodge and Coffee Shop will remain open from the north via the Parkway. Signs will be in place to direct visitors to the Bluffs Lodge and Coffee Shop. Upon completion of the first phase of construction, additional closures and detours will follow between mp 218 near Cumberland Knob and mp 240.7 near Doughton Park. Project work is scheduled to be complete in the summer of 2012.

Additional Advisory: The Historic Stone Guardwall Reconstruction Project will involve 28 miles of the Blue Ridge Parkway (mp 217 to mp 245) that contain 32,000 linear feet of historic rock masonry walls. A significant portion of the walls is severely deteriorated due to settlement and the effect of freeze-thaw cycles over the past 75 years. This project rehabilitates and reconstructs the most deficient wall sections. The Blue Ridge Parkway is recognized worldwide as an international example of landscape design achievement. Designed and built to provide a leisurely recreational driving experience and showcase the scenic resources of the central and southern Appalachian Mountains, this section of Parkway displays the historic rock walls that line the motor road. Constructed during the late 1930s, these rock walls are now an important historic Parkway resource. Though built in the rustic style used throughout other American national parks, the walls have become a significant feature that defines the visual and historic character of the Blue Ridge Parkway. This project will restore the structural integrity and historic appearance of this important cultural resource.



What's New in FRIENDS' Online Store?

High-quality Nike golf balls "strikingly" refinished with the FRIENDS of the Blue Ridge Parkway logo. Great as stocking stuffers or all year long! A sleeve of three balls is only \$5.00.

FRIENDS also has fleece vests, ballcaps, elegantly tinned peanuts, and of course gorgeous books and many other items for sale. You can shop and support the Parkway at the same time! Visit [FRIENDS' online store](#) for other great gift ideas!



FRIENDS Events



In late October, under peak autumn leaves and on a beautiful course in Arden, NC, FRIENDS of the Blue Ridge Parkway celebrated the Parkway's 75th anniversary with its first NC golf classic and dinner celebration. The setting was The Cliffs at Walnut Cove, a golf course and residential community developed with sustainable Parkway viewsheds in mind, and the event culminated in a tribute to Parkway Superintendent Phil Francis and a concert by perennial Parkway supporter [Timothy Seaman](#). FRIENDS is grateful to the sponsors and participants who made it possible. We were able to raise needed funds for Parkway programs while giving Parkway supporters an opportunity to enjoy each other's company in the shadow of the mountains we all love. View the [slideshow](#).

FRIENDS of the Blue Ridge Parkway is the sole beneficiary of proceeds from the Blue Ridge Marathon! This means your participation, your volunteer hours, and your company's sponsorship of this exciting event all translate into support for Parkway programs! The Marathon is April 16, 2011, and plans are already well underway! Contact [Laura Mitchell](#) at 540/772-2992.



STAY CONNECTED WITH YOUR FRIENDS

FRIENDS of the Blue Ridge Parkway
P.O. Box 20986 | Roanoke, VA 24018

540.772.2992 | 800.228.PARK (7275) | Staff@FriendsBRP.org

Become our [Facebook](#) friend | Join our [Flickr](#) group | Follow us on [Twitter](#)

[Forward email](#)

 **SafeUnsubscribe**®

This email was sent to rod_broker@friendsbrp.org by rod_broker@friendsbrp.org.
[Update Profile/Email Address](#) | Instant removal with [SafeUnsubscribe](#)™ | [Privacy Policy](#).

Email Marketing by



FRIENDS of the Blue Ridge Parkway, Inc. | 3800 Electric Rd | Suite 103 | Roanoke | VA | 24018